

Installation Instruction

(Mitsubishi Outlander 2014+)

Precautions

- All pictures in this manual are for reference only. Pictures and objects may differ, but the installation method is the same.
- In order to facilitate your installation, please carefully read the product manual before installation; When installing, protect your car's surface and avoid scratching.
- Please check regularly if all accessories connected with the car are loose to ensure safety.

Installation Steps

Refer to the parts list and accessory drawings to check if the accessories are complete. After the product is installed, press the tailgate button for 3-5 seconds. You will hear a sound "DI——" and then loose your hand. Press the tailgate button again and close it. You will hear two sounds. Tail gate learning is finished.



1. Remove the original car trim panel.



2. Remove the left lower brackets and left brace rod of the original car. Then install our lower left bracket. (The left and right steps are the same)



3. Remove the original ball head, install our ball head and add a gasket under the ball head (The left and right steps are the same).



4. Punch a hole here. The brace rod cable passes through the rubber plug.



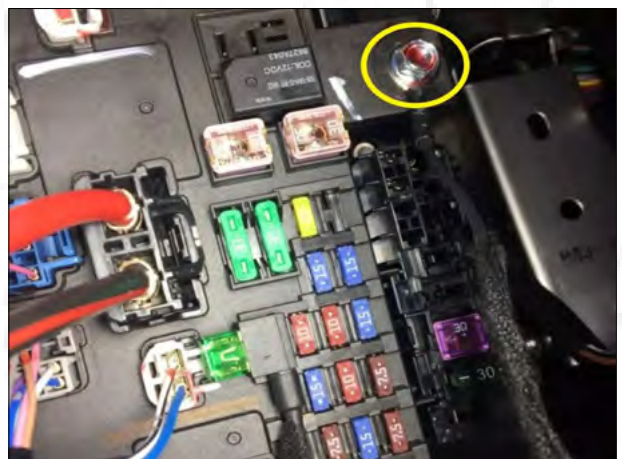
5. Brace rod installation completed schematic.



6. Remove the trim panel under the main drive and find the power supply.



7. Power supply.



8. Ground wire.



9. Disassemble the rubber plug at the main driving belt B-pillar to find the central control cable.



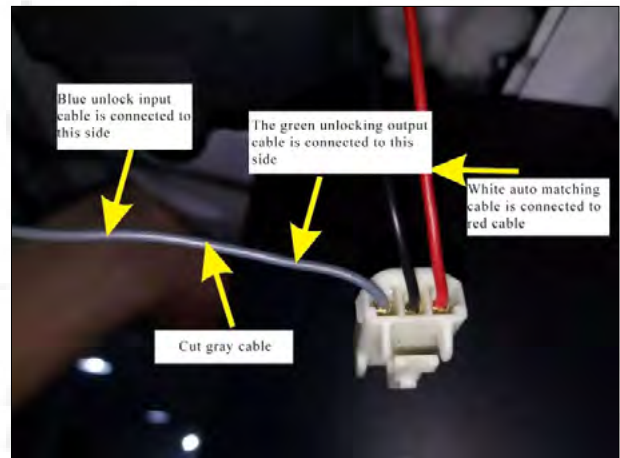
10. The central control cable is connected to the purple cable (The first fifth row from the left to the right).



11. The power cable and the central control cable follow the yellow arrow through the rubber plug until the tailgate cover.



12. Remove the original car screw, remove the door lock, install our suction lock and fix it with the original car screws.



13. Unplug this socket to connect the three-way adapter socket at the door lock.



14. According to the color, insert the Hall cable, power supply cable and electric suction lock cable to the control box.



15. Control box installation position, fixed with special screws, mesons, gaskets.



16. Remove the original car trim panel and punch a hole to install our tailgate switch button.

After the installation is complete, you must set the tailgate learning. Make sure that the door can be opened and closed in place. (Raise the tailgate to ideal height. Then press the tailgate button for 3-5 seconds. You will hear a sound "DI——" and then loose your hand. Press the tailgate button again and close it. You will hear two sounds "DI DI". Tail gate learing is finished.) If you do not hear two sounds, learning is unsuccessful and you need to re-learn. If you can not close the door, use your hand to push the door to close when you are learning.

Disclaimer

Due to improper installation and improper use, caused the relevant issues and losses, these not include within our company 's warranty. Thanks for your purchasing our products. Please read the manual carefully before use and collect it for later reference. These pictures for reference only, please refer to the actual product.

Key Control Method

1. Press the original Key fobs three times to open and close the door.
2. Press the front switch button to open and close the door.

Setting Height

- 1.Raise the tailgate to the ideal height;
- 2.Press the tailgate switch for 3-5s;
- 3.When you hear a long sound "Di——", loose your hand and press the tailgate switch again to close the door.
- 4.When you hear two sounds "Di Di", Setting height is finished.

Note: Do not close the door with your hands after setting the ideal height.

Be sure to use our own tailgate switch.

Fault Solution

The original key fob does not work	Check if the yellow central control line is connected.
Not working after installation	1. Check if the positive power supply is connected with 12V-16V. 2. Check if the power fuse is inserted. 3. Check if the ground wire is connected.
Closing the tailgate not in place The tailgate can only open to half	1. Check if the left and right bracket are installed reversed. 2. Check if the control box wire is inserted. 3. Check if the brackets are fixed with our screws. 4. There are two rubbers on the left and right sides of the original tailgate cover. Check if they are loose and need to be tightened.